

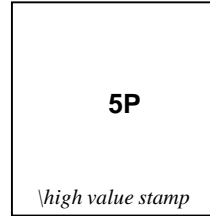
1857

Crown of Great Britain and Heraldic Flowers of the United Kingdom

thick porous wove paper with mesh

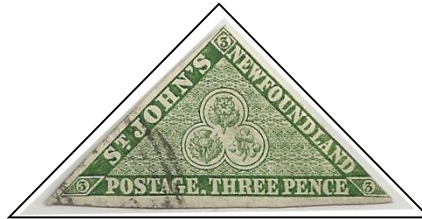


1 - no gum

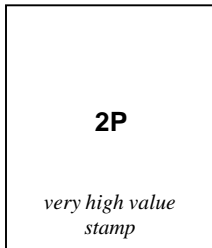


high value stamp

5

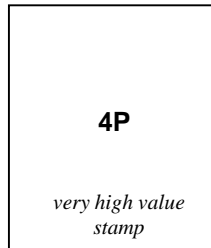


3



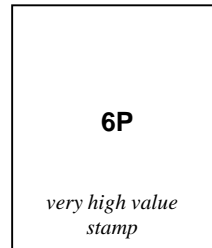
very high value stamp

2



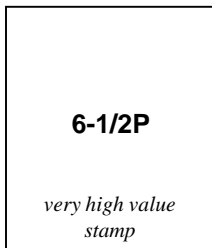
very high value stamp

4



very high value stamp

6

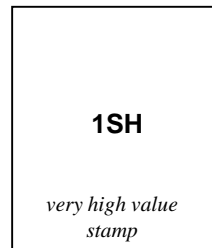


very high value stamp

7



8 - no gum



very high value stamp

9

1860

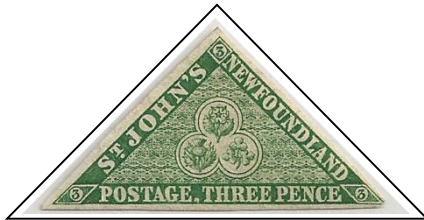
Types of 1957 - Crown of Great Britain and Heraldic Flowers of the United Kingdom

Wove Paper no Mesh

2P
orange

high value stamp

11



11A

4P
orange

very high value stamp

12

6P

high value stamp

13



12A

1SH

very high value stamp

15

1861-2

Types of 1957



15A



17



18

1P
reddish brown

very high value stamp

16



20



21



19



22 - no gum



23

1865-94
Codfish and Other Designs
Perforated 12



24



25



26 - no gum



30



27



28



29



31

1868-94
Edward VII and Queen Victoria



32



32A



33 - never hinged



34 - no gum

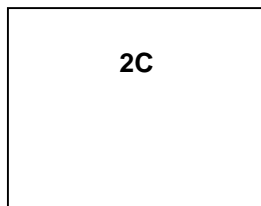


35



36

1876-79
Previous Types Rouletted



2C

38



37



39



40

1880-86
Edward IV, Queen Victoria, Codfish and Harp Seal
Perforated 12



41



42



43 - never hinged



44



45 - no gum



46



47 - no gum



48
Red orange



48a
orange



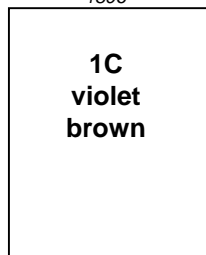
49



51
umber brown



51a
brown



1C
violet
brown

52



53



54



55

British Colony of NEWFOUNDLAND

1887-96 Newfoundland Dog, Schooner



56
rose red



57
orange red



58
black

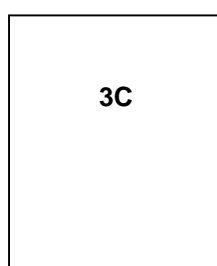


59

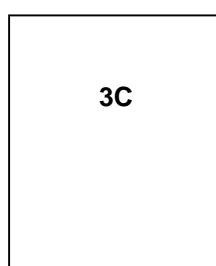
1890 Queen Victoria



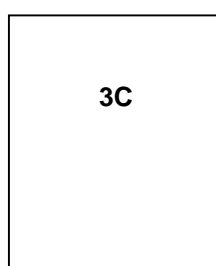
60 – no gum
slate



60a
gray lilac



60b
brown lilac



60c
lilac



60d
slate violet

British Colony of
NEWFOUNDLAND

1897, June 24th

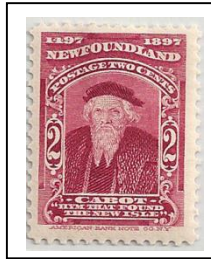
Commemorating the 400th anniversary of John Cabot's discovery of Newfoundland and the 60th year of Queen Victoria's reign.



63
Cape Bonavista



61
Queen Victoria

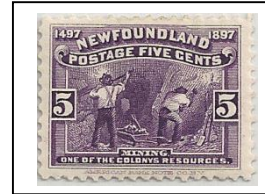


62
John Cabot



64
Caribou Hunting

Backed
stamped
"Rp."



65
Mining



66
Logging



67
Fishing



68
Cabot's Ship "Matthew"



70
Seals



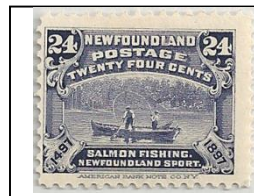
69
Willow Ptarmigan



72 - no gum
Colony Seal



74
Henry VIIth



71
Salmon Fishing



73 - no gum
Iceberg off St. John's

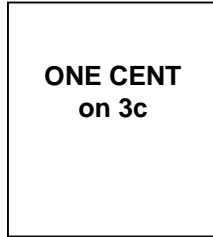
Backed
stamped "GB"
(hinge residue
covering part
of G

British Colony of NEWFOUNDLAND

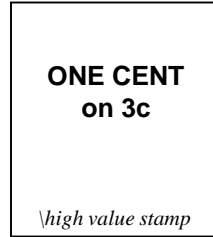
1897, October Surcharged Queen Victoria Stamps



75



76



77

1897 - 1901 Royal Portraits



78

Edward VIII child



79

Queen Victoria



80

Queen Victoria



80a

Queen Victoria



81

Edward VII as Prince of Wales



1998

82

Edward VII as Prince of Wales



83

Queen Alexandra as Princess of Wales



84

Queen Mary as Duchess of York



85

George V as Duke of York

1908, September Map of Newfoundland

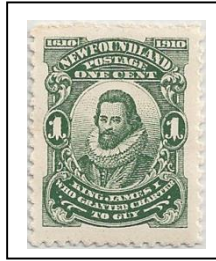


86

British Colony of NEWFOUNDLAND

1910, August 15th Tercentenary of the Colonization of Newfoundland "Guy Issues"

litho



87
James I



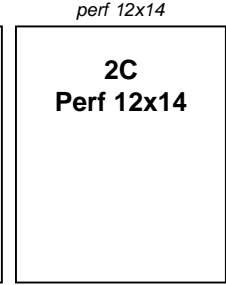
89
John Guy



90
Guy's Ship the *Endeavour*



88
London & Bristol Co. Arms



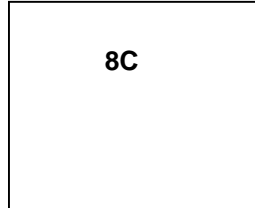
88a
London & Bristol Co. Arms



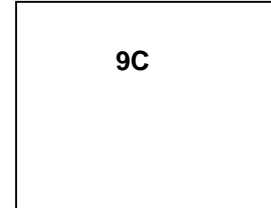
91
View of Cupids



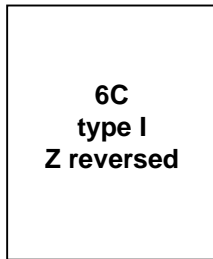
91a
View of Cupids



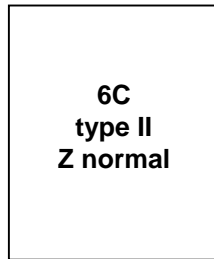
93
View of Mosquito



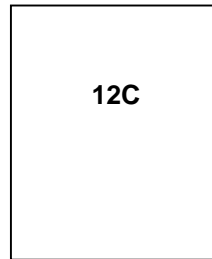
94
Logging Camp



92
Lord Bacon



92A
Lord Bacon

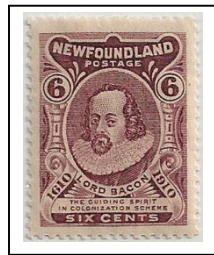


96
Edward VII

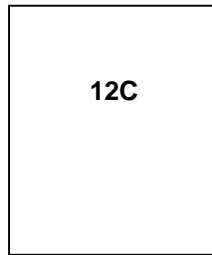


97
George V

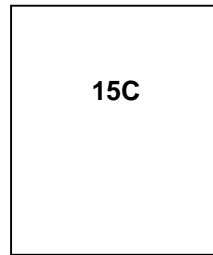
Engraved
(1911)



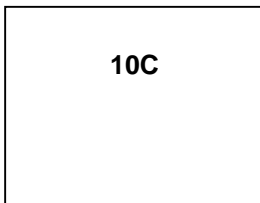
98
Lord Bacon



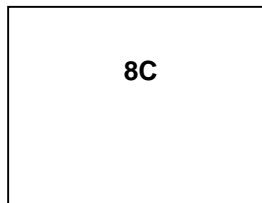
102
Edward VI



103
George V



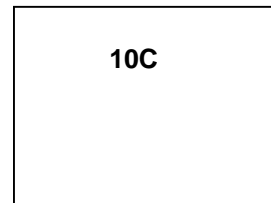
97
Paper Mills



99
View of Mosquito



100
Logging Camp



101
Paper Mills

Commemorating the 400th anniversary of John Cabot's discovery of Newfoundland and the 60th year of Victoria's reign. The ship on the 10c was previously used by the American Bank Note Co. as the "Flagship" of "Columbus" on U.S. stamp #232. The portrait on the 2c, intended to be John Cabot, is said to be a Holbein painting of his son, Sebastian.

**1911, June 19th
Royal Family Issue**



104
Queen Mary



105
George V



106
Prince of Wales
(Edward VII)



107
Prince Albert (George VI)



108
Princess Mary



109
Prince Henry



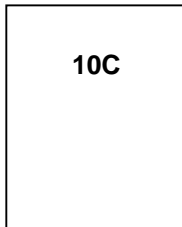
110 - blue
Prince George



110a - peacock blue
Prince George



111
Prince John



112
Queen Alexandra



113
Duke of Connaught



114
Colony Seal

1919, January 2nd
Trail of the Caribou Issue

Services of the Newfoundland contingent in WW1. Each denomination is inscribed with the name of a different action in which Newfoundland troops took part.



115
Suvla Bay



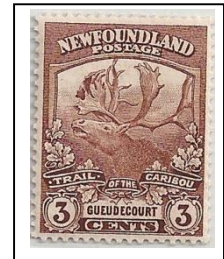
116 - scarlet
Ubique



116 - carmine red
Ubique



117 - red brown
Gueudecourt



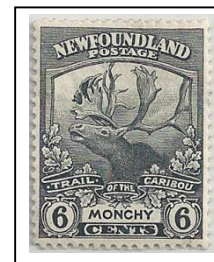
117b - brown
Gueudecourt



118
Beaumont Hamel



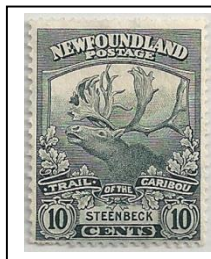
119
Ubique



120
Monchy



121
Ubique



122
Steenbeck



123
Ubique



124
Lancemarck



125
Cambrai



126
Combles

British Colony of
NEWFOUNDLAND

1920
Stamps of 1897 Surcharged



127 – never hinged

THREE CENTS
on 15C

high value stamp

128



129 – never hinged



130 – never hinged

1923-24
Scenes of Newfoundland and St. John's



131 – never hinged
Twin Hills, Tor's Cove



133
War Memorial St. John's



134
Humber River



135
Coast of Trinity



132
South West Arm, Trinity



unlisted color

132
South West Arm, Trinity



136 – never hinged
Upper Steadies, Humber



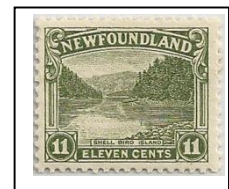
137
Quidi Vidi, near St. John's



139
Humber River Canyon



138
Caribou Crossing Lake



140
Shell Bird Island



142
Humber River near Little Rapids



141
Mt. Moriah, Bay of Islands



143
Placentia, from Mt. Pleasant

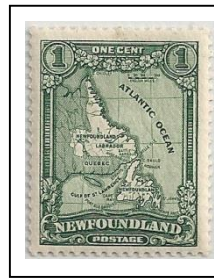


144
Topsail Falls near St. John's

1928, January 3rd
Map of Newfoundland and Other Commemorations



146
Steamship "Caribou"



145
Map of Newfoundland



147 – never hinged
Queen Mary, George V



149
Express Train



148
Prince of Wales



152
Cabot's Tower, St. John's



150
Newfoundland Hotel, St. John's



151
Heart's Content



154
GOP, St. John's



155
Cabot's Tower, St. John's



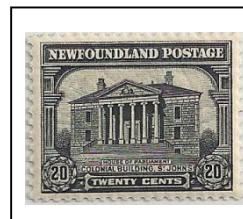
153
War Memorial, St. John's



158 – never hinged
GOP, St. John's



156
First Nonstop Transatlantic Flight



157
Colonial Building, St. John's



159
Grand Falls, Labrador

1929
Stamp of 1923-24 Surcharged



160

1929-31
Types of 1928 re-engraved and unwatermarked



164
Steamship "Caribou"



163
Map of Newfoundland



165
Queen Mary, George V



167
Express Train



166 – never hinged
Prince of Wales



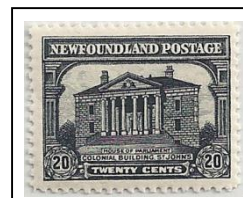
168
Newfoundland Hotel, St. John's



169
War Memorial, St. John's



170
First Nonstop Transatlantic
Flight



171
Colonial Building, St. John's

1931
Types of 1928 re-engraved
and watermarked with Coat of Arms



172
Map of Newfoundland



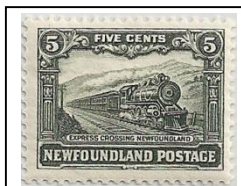
173
Steamship "Caribou"



175
Prince of Wales



174
Queen Mary, George V



176
Express Train



177 – never hinged
Newfoundland Hotel, St. John's



178
Heart's Content



179
War Memorial, St. John's



180
First Nonstop Transatlantic Flight



182
Grand Falls, Labrador



181
Colonial Building, St. John's

British Colony of NEWFOUNDLAND

1932-37 Commemorations



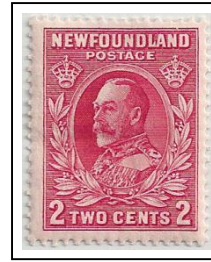
183 green
Codfish



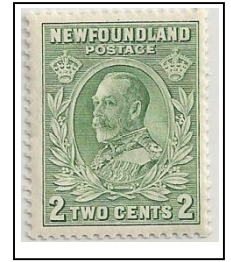
184 gray black
Codfish



184c imperf pair – no gum
Codfish



185 rose
George V



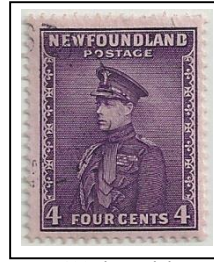
186 – never hinged
George V



186 dark green,
unlisted color
George V



187
Queen Mary



188 deep violet
Prince of Wales



189 rose lake
Prince of Wales



189d rose lake –
never hinged
Prince of Wales



190 violet brown
Caribou



191 deep violet
Caribou



192
Princess Elizabeth



193 – never hinged
Salmon Leaping Falls



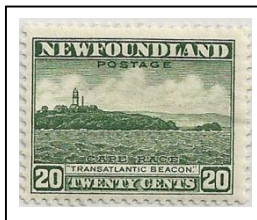
194
Newfoundland Dog



195
Harp Seal Pup



195b
Harp Seal Pup



196
Cape Race



197
Sealing Fleet



198
Fishing Fleet Leaving for
"The Banks"



199
Fishing Fleet Leaving for
"The Banks"

1932
Queen Elizabeth, Paper Mill and Iron Ore



209 – never hinged
Corner Brook
Paper Mill

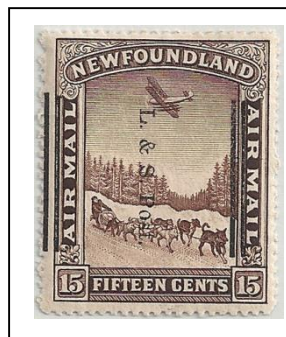


208 – never hinged
Queen Elizabeth when
Duchess of York



210
Loading Iron Ore at Bell
Island

1933, February 9th
Overprinted Airpost Stamp



211
L & S stands
for Land and Sea

1933
Sir Humphrey Gilbert Issues

Celebrating the 350th anniversary of the annexation of Newfoundland to England, Aug 5, 1583, by authority of Letters patent issued by Queen Elizabeth I to Sir Humphrey Gilbert.



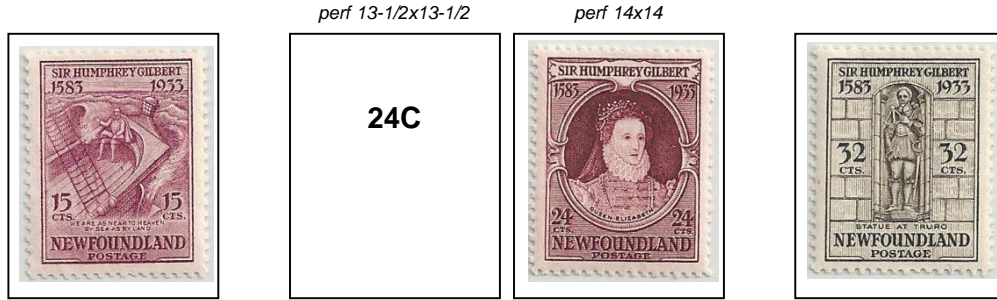
212 Sir Humphrey Gilbert 214 Gilbert Coat of Arms 216 Token from Queen Elizabeth I 221 Coat of Arms of England 221b Coat of Arms of England



213 Compton Castle, Home of Gilbert Family 215 Eton College 217 Sir Humphrey Receiving Roly Patents for Colonization 218 Sir Humphrey's Ships Leaving Plymouth, 1583



219 The Ships Arriving at St. John's 220 Annexation of Newfoundland, Aug 5, 1583 223 Cpt. John Mason's Map of Newfoundland, 1626 223b Cpt. John Mason's Map of Newfoundland, 1626



222 Sir Humphrey on the Deck of the "Squirrel" 224 Queen Elizabeth I 224b Queen Elizabeth I 225 Gilbert Statue at Truro

1934, May 6th
Silver Jubilee Issues

These were common issues and designs throughout the British Empire



226



227



228



229

1937, May 12th
Coronation Issues

These were common issues and designs throughout the British Empire



230



231



232

1937, May 12th
Commemoratives



233
Codfish



234 (die I)
Map of Newfoundland



235
Caribou



236
Corner Brook Paper Mills



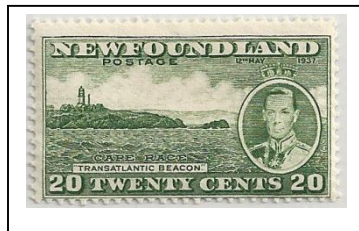
237
Salmon



238
Newfoundland Dog



239
Harp Seal Pup



240
Cape Race



241
Loading Iron Ore at Bell Island



242
Sealing Fleet



243
Fishing Fleet Leaving for
"The Banks"

**1938, May 12th
Royal Family Issue**



245
King George VI



246
Queen Elizabeth



247
Princess Elizabeth



248
Queen Mother Mary

**1939, June 17th
Royal Visit of George VI and
Queen Elizabeth**



249

**1939, November 20th
Royal Visit with Surcharges**



250



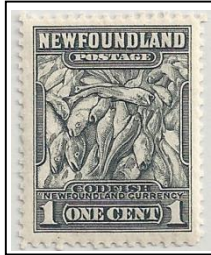
251

**1941-44
Grenfell Mission, 50th Anniversary**



252
Sir Wilfred Grenfell and "Strathcona II"

1941-44
Types of 1931-38
perforated 12-1/2



253
Codfish



254
King George VI



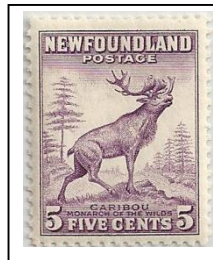
255
Queen Elizabeth



256
Princess Elizabeth



259
Corner Brook Paper Mills



257
Caribou



258
Queen Mother Mary



260
Salmon Leaping Falls



261
Newfoundland Dog



262
Harp Seal Pup



263
Cape Race



264
Loading Iron Ore at Bell
Island

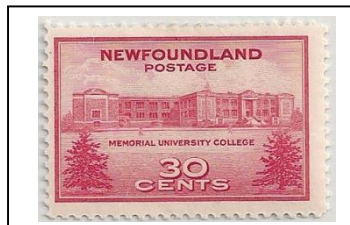


265
Sealing Fleet



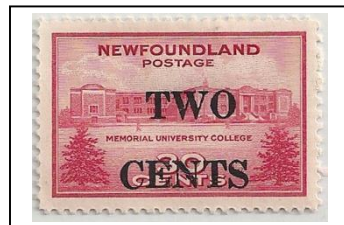
266
Fishing Fleet Leaving for
"The Banks"

1943, January 2nd
**Memorial University
College**



267

1946, March 23rd
Memorial University College
TWO CENTS Surcharge



268

1947, April 21st
Princess Elizabeth's 21st Birthday



269
Princess Elizabeth

1947, June 23rd
450th Anniversary of Cabot's Arrival off Cape Bonavista



270
Deck of the Matthew

Air Post Stamps Transatlantic Overprints

1919, April 12th



C1

1919, June 9th



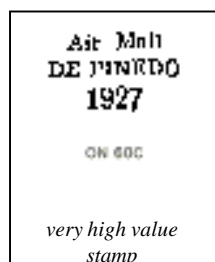
C2

1921, November 7th



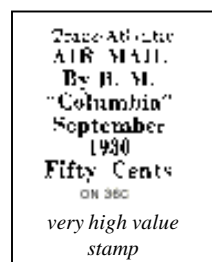
C3

1927, May 21st



C4

1930, September 25th



C5

C1 was issued for the first attempt to cross the Atlantic by air, by Lt. H. G. Hawker (pilot) and Lt. Cdr. K. M. Grieve (navigator). This flight was ended by a controlled crash landing in the ocean after about 13 hours of flying, the crew being rescued. The plane and mail bag were salvaged about five weeks later by an east-bound ship and the envelopes were delivered to England by sea. Also in April, 1919, W. C. Campbell, the Secretary of the Postal Depart, prepared stamps for use on the Raynham-Morgan transatlantic flight attempt that took off shortly after the Hawker flight. Campbell is believed to have applied "Aerial Atlantic Mail" to #117 in manuscript and J. A. Robinson, the Postmaster applied his initials J.A. R. also to the manuscript. This flight lasted only a few hundred yards, as did a second attempt in July. Mail from these attempts was then taken by sea to London and delivered in January 1920.

C2 was issued for the June 14th 1919 flight of Cpt. J. Alcock and Lt. A. W. Brown. This became the first successful non-stop transatlantic flight. C2 also was used on mail of other flights.

British Colony of
NEWFOUNDLAND

1931, January 2nd
Air Post Stamps
Unwatermarked



C6



C7



C8

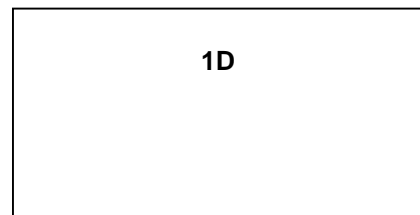
1931
Watermarked



C9



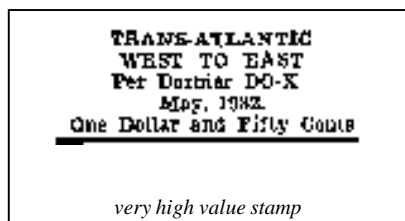
C10



1D

C11

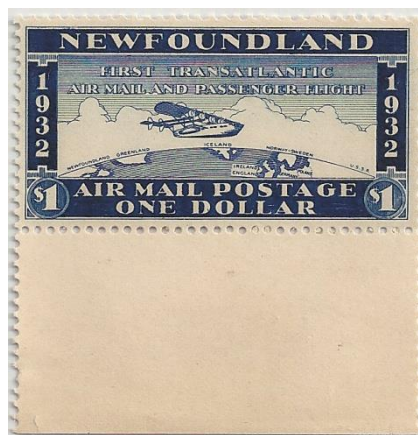
1932, May 19th
Air Post of 1921 - Surcharged
Thick Porous Wove Paper with Mesh



very high value stamp

C12

This stamp was produced in the US in 1932 by a private company under contract with Newfoundland authorities. The government cancelled the contract and the stamp was not valid for prepayment of postage



1939-49
Postage Due Stamps
Unwatermarked

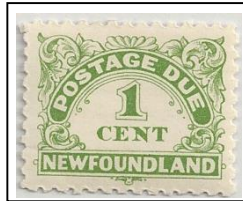
perf 11x11 - 1949



1C

J1

perf 10x10-1/2



J1a

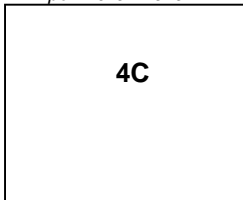


J2



J3

perf 10x9 - 1949



4C

J4

perf 10x10-1/2



J4a



J5



J6

1949
Postage Due Stamp
Coat of Arms watermark



J7