

British Colony of  
**CAPE OF GOOD HOPE**  
1814- 1910

watermark #15

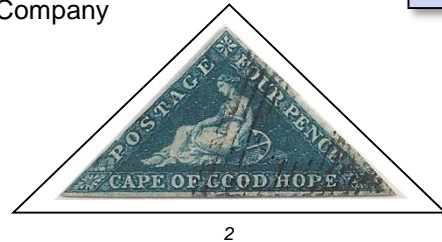


**1854, September 1**  
**Hope Seated Triangle design**

imperf, engraved, bluish paper, watermark 15  
printed by Perkins, Bacon & Company



1



2

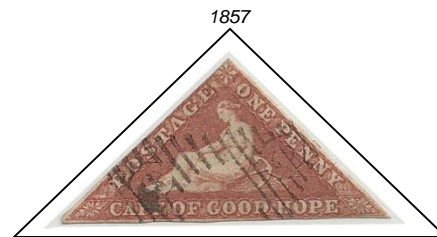
**1855- 1858**

**Hope Seated Triangle design**

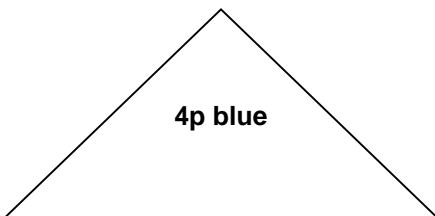
imperf, engraved, white paper, watermark 15  
printed by Perkins, Bacon & Company



3  
rose



3a  
dull red

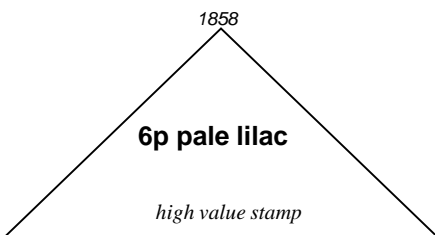


4p blue

4  
blue



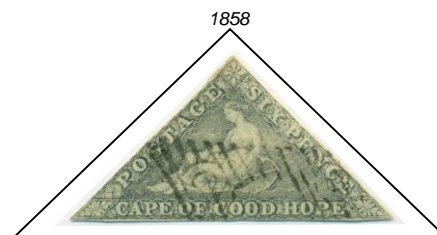
4b  
deep blue



6p pale lilac

high value stamp

5  
pale lilac



5c  
slate purple on bluish paper



6  
yellow green



6a  
dark green

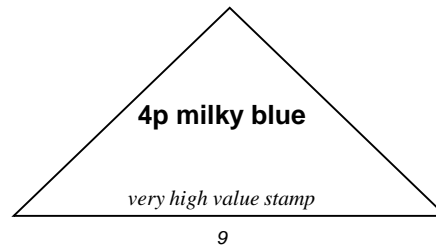
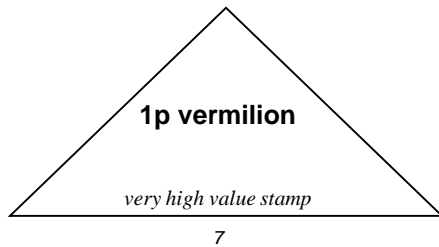
British Colony of  
**CAPE OF GOOD HOPE**  
 1814- 1910

**Woodblocks**

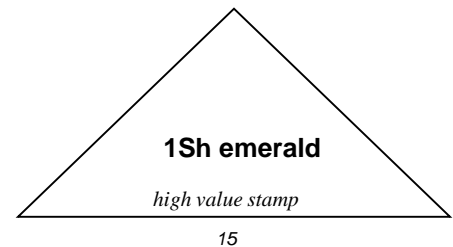
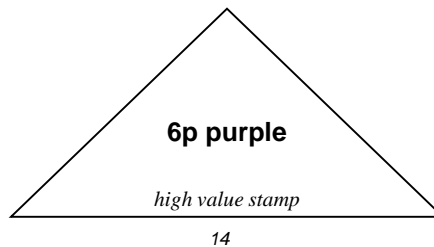
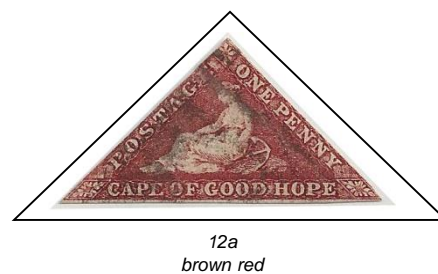
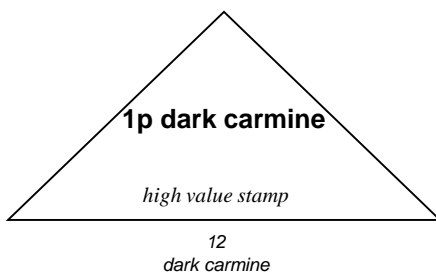
The plates were made locally and composed of clichés mounted on wood. The errors were caused by a cliché of each value being mounted in the plate of the other value. In 1883 plate proofs of both values on white paper, reprints, were made. The 1p is in dull orange red, the 4p in dark blue. These were know canceled, as a few were misused as stamps. Counterfeits exist (from the Scott Catalogue)

**1861**
**Wood Blocks, Hope Seated Triangle design**

imperf, typo, unwatermarked, laid paper  
 Printed by: Saul Solomon and Co.


**1863- 1864**
**Hope Seated Triangle design**

imperf, engraved, bluish paper, watermark 15  
 printed by De La Rue & Company



These stamps can be distinguished from #3-6 not only by colors but because they often appear in a granular ink or with the background lightly printed in whole or part.

# British Colony of CAPE OF GOOD HOPE

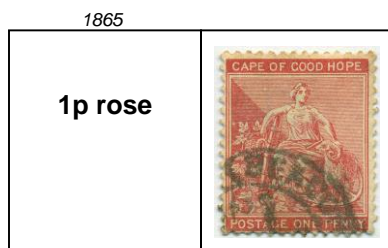
watermark #1



1864 - 1865

## "Hope" and Symbols of Colony design

perf 14, typo, watermark 1  
with frameline around the stamp



16  
rose

16a  
carmine red



17  
blue

17c  
deep blue



18  
bright violet

18a  
dull violet

18b  
pale lilac



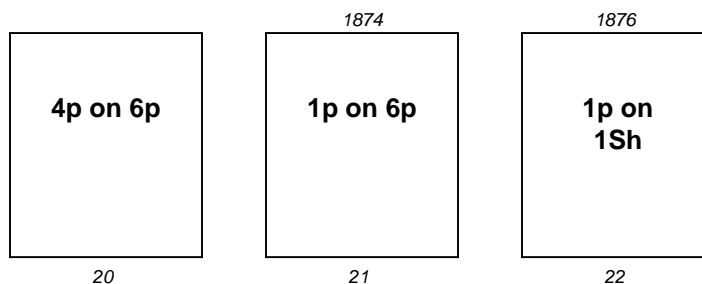
19  
yellow green

19a  
blue green

1868 - 1876

## Stamps of 1864 surcharged in red or black

space between words and bar varies



# British Colony of CAPE OF GOOD HOPE

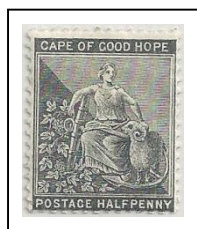
1871 - 1881

## "Hope" and Symbols of the Colony design

perf 14, typo, watermark 1

without frameline around the stamp

1875



23

1872



24

1881



25

1881



26

1876



27



28

1879-1880

## Stamps of 1871 surcharged in red or black

1879



29

1880



30

1880



32

1880



32

watermark #2

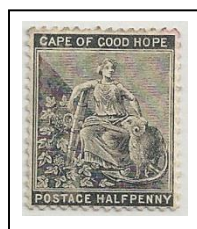


1882 - 1883

## "Hope" and Symbols of the Colony design

perf 14, typo, watermark 2

without frameline around the stamp



33



34



35



36



37

1883

5Sh  
orange

high value stamp

38

1882

## Surcharges

$\frac{1}{2}$  p on 3p  
claret

39

Watermark #1



40

Watermark #2



# British Colony of CAPE OF GOOD HOPE

watermark #16

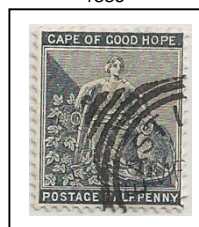


1884 - 1898

**"Hope" and Symbols of Colony design**

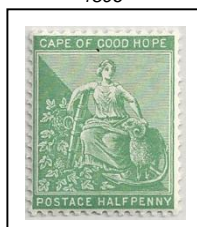
perf 14, typo, watermark 16  
without frameline around the stamp

1886



41

1896



42 – never hinged

1885



43



44

1897



45

1898



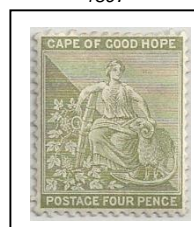
46

1890



47

1897



48



49

1889



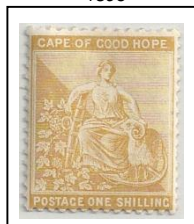
50

1894



51

1896



52

1887



53

1896



54

1891 - 1893

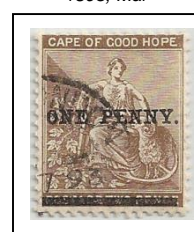
**Surcharged in Black**

1891, Mar



55

1893, Mar



58

1892 - 1896

**Hope seated new design**

perf 14, typo, watermark 16

1896



56



57

# British Colony of CAPE OF GOOD HOPE

**1893 - 1902**

**Hope Standing design**  
perf 14, typo, watermark 16

1898



59



60

1902



61

**1900, Jan**

**Table Mountain and Bay with Coat of Arms design**  
perf 14, typo, watermark 16



62

**1902 - 1904**

**King Edward VII design**  
perf 14, typo, watermark 16

1904



63



64



65

1904



66

1903



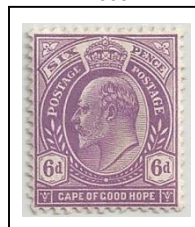
67

1903



68

1903



69

1903



71



70