

Czech Legion Army

1918 - 1920

1918

Russian Stamps of 1909-12 surcharged

typo, perf 14x14½

10k dark blue

Very high value

A1

FIRST ISSUE

The first specific stamp issued for the region was in Nov 1918, when the Czechoslovak Legion overprinted a 10 kopek Russian Imperial stamp in Chelyabinsk with "CESSKJA POCTA" in Cyrillic. The stamp was only available for a few days.

Dec 1919

Various Designs of the Legion Post

unwatermarked, litho, imperf, 11½, 13¼

PICTORIAL ISSUES ISSUES

Stamps were originally printed by Makusin and Posochin in Irkusk, and delivered to the Czech Legion army imperforated and ungummed in Dec, 1919. A cracked yellow gum was applied at the Czech Legion Post Offices.

In Jan 1920, a quantity of gummed stamps were perforated 11½.

Later, ungummed imperforate remainders were returned to Prague. A smooth white gum was applied. Some of the remainder sheets were perforated 11½, but the majority were perforated 13¼ and offered for sale on the philatelic market.

25k carmine

1

Urn and Cathedral in Irkutsk

50k yellow green

2

Armored railroad Car

1r red brown

3

Legion Sentinel

25k carmine

1a

Urn and Cathedral in Irkutsk

50k yellow green

2a

Armored railroad Car

1r red brown

3a

Legion Sentinel



remainder
Urn and Cathedral in Irkutsk



remainder
Armored railroad Car



remainder
Legion Sentinel

1920 Lion of Bohemia Issue

Two Variations



Type 1

Type 2

Two types were printed in approximately the same quantity.

Type 1 – large sabre handle with many lines extending from the upper right, almost to the handle

Type 2 – small sabre handle with few lines extending from upper right stopping from the handle

Three Printings

Printings 1 and 2 were done in Prague in 1919, arriving in Siberia in 1920. Printing 3 was done in Prague in the 1920s, specifically for sale to the philatelic market

All overprints and surcharges were applied to each printing

Printing 1: steel blue frame, carmine center



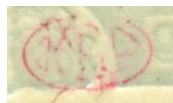
Printing 2: gray blue frame, red center



Printing 3: deep blue frame, carmine center, heavy carmine inking at the top of the oval.



1920 Lion of Bohemia Issue typo, perf 14x14½



backstamped with collectors mark of Karl Kaplanek a noted dealer in Prague



4
type 1



4a
type 2



4
philatelic printing
type 1

1920 Lion of Bohemia Issue overprinted "1920" in black typo, perf 14x14½



backstamped with collectors mark of Antonin Cerny, a prominent stamp dealer in Prague (1879-1938)



5
type 1

25k gray blue
frame, red
center

5a

1920

Lion of Bohemia Design, surcharged with various values in green

typo, perf 14x14½



6a (type 2)



7a (type 2)



8a (type 2)



9a (type 2)

Note: all stamps in this series are backstamped with collectors mark of Antonin Cerny, a prominent stamp dealer in Prague (1879-1938)



10a (type 2)



11a (type 2)



12a (type 2)



13a (type 2)



14 (type 1)

-- Most likely Counterfeit Overprints --

1920

Lion of Bohemia Design, surcharged with various values in green

Inverted Overprint

typo, perf 14x14½



6 inverted overprint type 1



7 inverted overprint type 1

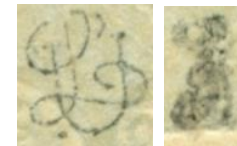


8 inverted overprint type 1



9 inverted overprint type 1

Note: all stamps in this series are backstamped with Lešetický-Ustředna, a prominent Expert committee in Prague + an unknown stamp



10 inverted overprint type 1



11 inverted overprint type 1



12 inverted overprint type 1



13 inverted overprint type 1



14 inverted overprint type 1